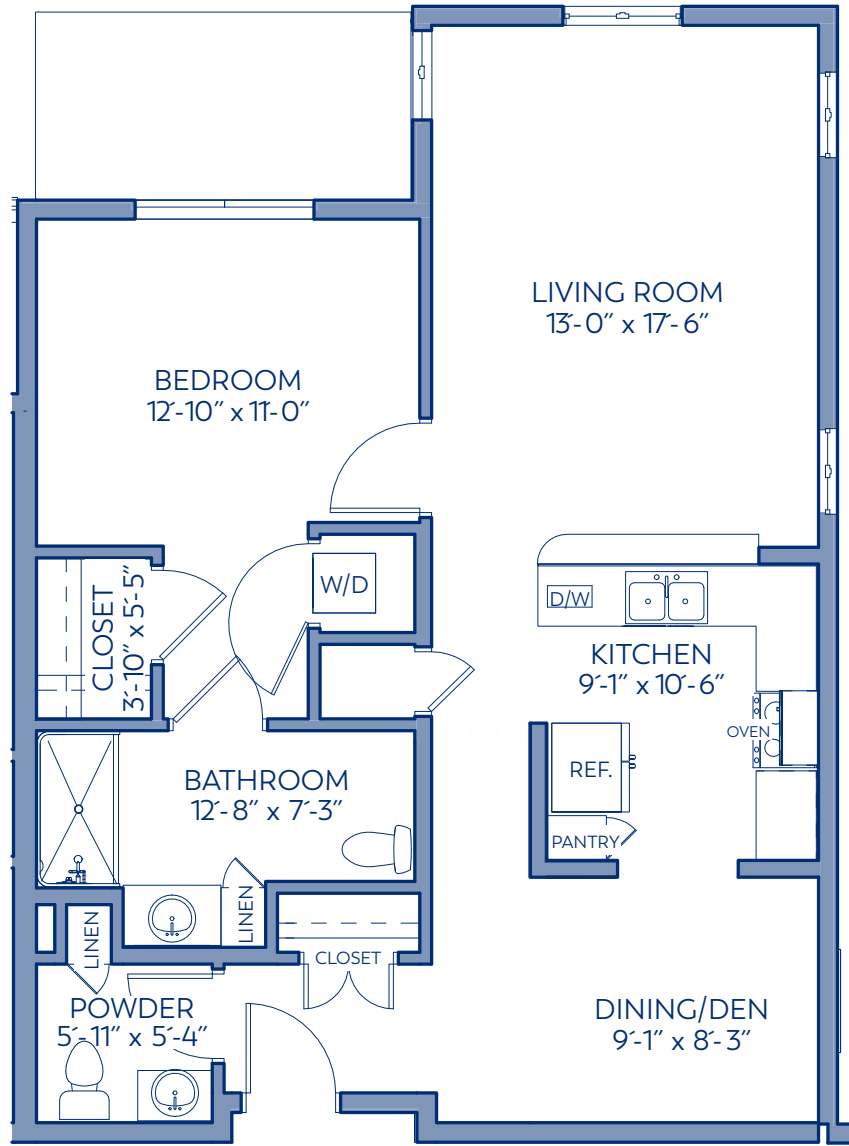




BUCKNER<sup>®</sup>  
VILLAS

Inspiring happiness.<sup>®</sup>



869 SQUARE FEET

# VERBENA I-WT

INDEPENDENT LIVING - ONE BEDROOM



Serving  
All Faiths



AL LICENSE #150005

INDEPENDENT LIVING | ASSISTED LIVING | MEMORY CARE | SKILLED NURSING  
11110 TOM ADAMS DRIVE, AUSTIN, TEXAS 78753 | [BUCKNERVILLAS.ORG](http://BUCKNERVILLAS.ORG) | 512.836.1515

# INDEPENDENT LIVING

GreenRidge at Buckner Villas offers a wide range of services and amenities to make your life more convenient, comfortable, and enjoyable.

## APARTMENT AMENITIES

Wide variety of well-designed apartments with wall-to-wall carpeting and blinds

All kitchen appliances including refrigerator/freezer (with ice-maker), electric range, microwave oven and dishwasher

Washer/dryer

Individually controlled heating and air-conditioning for your comfort

24-hour urgent response system

Audio-visual fire alarm and sprinkler system

Carports/underground parking

Walk-in closets

Ceiling fans

Gated community

## SERVICES

Tastefully prepared meals

All utilities (except telephone)

## SERVICES (Continued)

Basic cable television

Wireless Internet

Interior/exterior maintenance and groundskeeping services

Scheduled weekday transportation

Housekeeping

Life enrichment programs

Wellness programs

24-hour courtesy staff

Chaplain services

Recuperative and long term healthcare

## ACCOMMODATIONS

Graciously appointed dining room

Private dining room

Library

Computer center with internet and email access

Fitness center

Indoor heated pool/spa

Bistro

Movie Theater

Grand ballroom with reception area

Beauty/barber salon

Resident storage

Creative arts center

Classrooms and meeting rooms

Game room

Woodworking shop

Guest suite

Gardening areas

Assisted living

Certified Alzheimer's care

Medicare certified skilled nursing care



Serving All Faiths



AL LICENSE #150005

INDEPENDENT LIVING | ASSISTED LIVING | MEMORY CARE | SKILLED NURSING  
11110 TOM ADAMS DRIVE, AUSTIN, TEXAS 78753 | [BUCKNERVILLAS.ORG](http://BUCKNERVILLAS.ORG) | 512.836.1515